

INDEX

MONTRUSE ESTATE	PAGE 1
FOREST LAKE	PAGE 2
PASK GROUP	PAGE 2
EDEN RISE	PAGE 3
CHANCELLOR PARK	PAGE 3
LEVINGTON	PAGE 3
A WORD FROM NEV	PAGE 4

FOR ENQUIRIES AS TO OUR LATEST LAND RELEASE OR HOUSE AND LAND PACKAGES, PLEASE REFER TO BACK PAGE FOR FULL CONTACT DETAILS.

Montruse Estate Strikes Gold!

2006 has started off on a positive note for Pask Group with Montruse Estate at Calamvale experiencing the best 3 months in the project's history. With an average of 10 sales being made per month and with the entire 3rd release being sold out within 2 months of its release, Montruse is fast becoming one of the most sought after addresses in Calamvale.

Vic Cahill, Montruse Estate's Project Marketer, commented, "A renewed confidence is back in the market with prospective purchasers now realising that land so well located is becoming harder to come by. This confidence has been evident

with one of the estate's builders, Rosewood Homes, selling five of their house and land packages well before the homes were due for completion, something which has been unheard of in the property market in recent times".

Michael and Julia Ward were the first to purchase one of Rosewood Homes' house and land packages and the first lucky buyers to receive a Hayman Island Getaway that was offered during the recent 'Gold Bullion' promotion. Michael commented that, "Our decision to move to Montruse was all about a lifestyle choice. We love the convenience of having 3 major shopping centres, public transport, restaurants and coffee shops on

our doorstep. The estate itself provides great facilities such as a fitness circuit, BBQ areas and walking tracks in the bush land reserve which adjoins the estate. It really makes a refreshing change to have such great neighbours and being in such a friendly and enjoyable place to live. The Hayman Island Getaway really was an added bonus and we are very much looking forward to the trip. My wife and I could not be happier with our decision to make Montruse our new address".

Montruse Estate is also now home to the new QMBA Master Builder's Display Village which features 24 homes from some of Queensland's best builders including AV Jennings, Hallmark Homes and Ownit

Homes. The Display Village is open 10am to 5pm, 6 days a week (closed Friday). In addition to the Master Builder's Display Village, one of Queensland's award winning builders, Adenbrook Homes, is currently adding to their existing display village which, upon completion, will comprise 7 display homes.

Warrick Thommasson, Development Manager at Pask Group, added "We at Pask Group are extremely pleased with the progress of Montruse and the recent increase in sales and look forward to continuing to provide a high quality product that satisfies all the needs of our purchasers".

**NEW LAND RELEASE
AT FOREST LAKE
– COMING SOON**

WE ARE PROUD to announce that one of the very last parcels of land in the successful Forest Lake community will soon be released by Pask Group.

This boutique land release will comprise 54 lots ranging in size from approximately 450m² to 900m² and is conveniently located only 18 kilometres southwest from Brisbane CBD, with easy access to the Ipswich and Logan Motorways.

This parcel is set within an established and vibrant community of around 120 hectares of parklands and waterways, including Brisbane's largest recreational lake which is perfect for a range of water activities

such as sailing and kayaking. 38 kilometres of walking trails link each village to the lake, creating an opportunity for serene walks, runs and bike riding. Other activities the residents can enjoy include tennis, swimming, netball, basketball, football and a fitness centre. The current residents pride themselves in the community they are part of, with local clubs devoted to sharing passions from cooking to looking after their local area. There are also existing educational facilities in the area including 5 early learning centres, three primary schools, and two secondary schools, making this community perfect for family living.

The Forest Lake Village shopping centre, situated centrally within Forest Lake, has all the amenities you would expect for an estate catering for a community of over 20,000 residents, with supermarkets, specialty stores, restaurants and cafés. This parcel is within close proximity to this established infrastructure.

This will be some of the very last allotments to be released within the unique Forest Lake community. So register your interest now to be amongst the first to receive information about this exclusive land release.



pask™
livingproperty

**PASK GROUP
ON THE MOVE**

THE MOVE TO Pivotal Point at Southport on the Gold Coast was not a difficult one. After 15 years at Eugaree Street in Southport and having outgrown the office, Pask Group did not have far to move. Southport is undergoing a major metamorphosis and is expected to be the premier commercial precinct of the Gold Coast. Situated on the corner of Nerang and Marine Parade and adjoining Australia Fair Shopping centre this idyllic location was chosen as the new headquarters for the expanding operations of one of Queensland's largest private property developers.

Fit out specialist Hassell Interiors were engaged in transforming an empty shell into a state of the art office "dream". With

panoramic views overlooking the Broadwater and with Marina Mirage and Palazzo Versace as a backdrop, full advantage has been taken of this spectacular vista.

The brief to Hassell was for a 21st century functional office with clean lines encapsulating the views. Glass has been used extensively throughout the offices with a feeling of space, light and uninterrupted views.

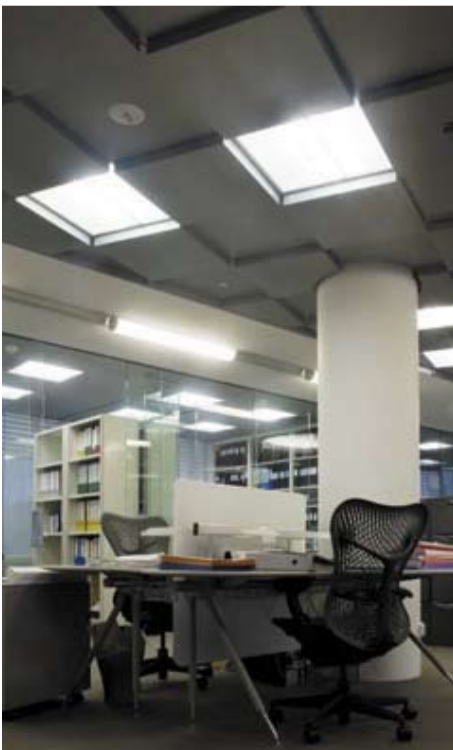
A gallery space has been created in the reception showcasing various developments with a feature wall of backlit Corian with an abstract design symbolizing the connections and spaces of a residential community.

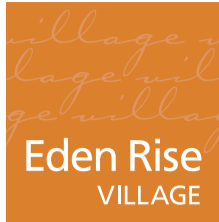
Lynne Pask co-ordinated the design and fitout which includes the very latest in ergonomically designed furniture, a staff

room with a fully equipped kitchen, espresso coffee machine to enjoy a latte whilst lounging on a specially designed banquette overlooking the broadwater.

Attention to detail and cutting edge design was represented by furniture pieces chosen from Fritz Hansen, Arne Jacobsen and the latest Artichoke lighting pendant by Paul Henningsen for Louis Poulsen. Custom furniture maker Synergy were commissioned for the boardroom table which was made from Canadian quilted maple.

We would like to thank Lynne and all of the team responsible for the new office which has certainly made a difference to everyone's working day at Pask Group.





SHOPPING VILLAGE NOW OPEN!

PASK GROUP is proud to announce that their first major retail development, Eden Rise Village is now open for trading. The centre, which is anchored by a 4000m² Coles Supermarket and 15 specialty retailers, opened its doors on November 30th 2005 with great success.

The first day's trading saw a record 3700 people through the doors, all of which enjoyed in the festivities of the day including "Fin Bar The Cook", serving up exquisite food samplings whilst entertaining shoppers. To celebrate the centre opening Pask Group

also gave away a new Gourmet BBQ to the value of \$1,750 to local resident Michelle Ross.

General Manager of Pask Group, Dean Pask said "It is a very proud day for us, after several years of planning and hard work by all members of the consulting team, to have such a successful grand opening. The timing could not have been more perfect with the adjoining Eden Rise Estate, also developed by Pask Group, selling its last remaining blocks at the end of 2005. Eden Rise locals can now enjoy the convenience of walking to their

very own shopping centre".

Stage 2 of Eden Rise Village is currently being planned and will add even more specialty retailers to the centre. This last stage of the centre is expected to commence construction towards the end of 2006. We are also excited to announce that a Coles Express Service Station and Hungry Jacks will also be opening in the 3rd quarter of 2006.

To see all of the photos from the opening and to find out more about the excellent selection of specialty shops on offer, please visit www.nevpask.com.au/edenrisevillage.



CHANCELLOR PARK
THE UNIVERSITY TOWN

"SHOP 'TIL YOU DROP" AT CHANCELLOR PARK

CHANCELLOR PARK RESIDENTS now have something else to smile about with a new \$5.9 million service and retail precinct located in their "backyard".

The "Chancellor Park Village Centre", completed in November 2005, comprises approximately 1,350 square metres of retail space incorporating quality service and retail tenants such as ANZ Bank, Chancellor Park Realty, Bradley and Bray Solicitors, Tachi Hair Design, various food outlets and much more. Soon to open will also be a Beach House Fitness Centre.

The new centre is conveniently located adjacent to "Woolworths Market Place" and is the latest addition to Chancellor Village which already includes the \$20 million "Chancellor Homemaker Centre" and

Queensland's first fully non-smoking tavern.

Pask Group is also very excited about the recent land release for Chancellor Park. The 3rd Release of the Berkley Precinct is unique as it offers the last remaining lake front blocks in the Chancellor Park Estate. The release comprises of cottage, courtyard and traditional allotments with lots sizes ranging from 450m² to 855m².

Peter Kinchin commented that "The expressions of interest received for this new release were high and with Chancellor Park being the only estate in the area offering lakeside living that is within walking distance to educational facilities, including Sunshine Coast University, not to mention convenience shopping, this land won't last long".

Please contact Peter Kinchin and his team on 07 5476 9422 to secure a block of land in this prestigious release.

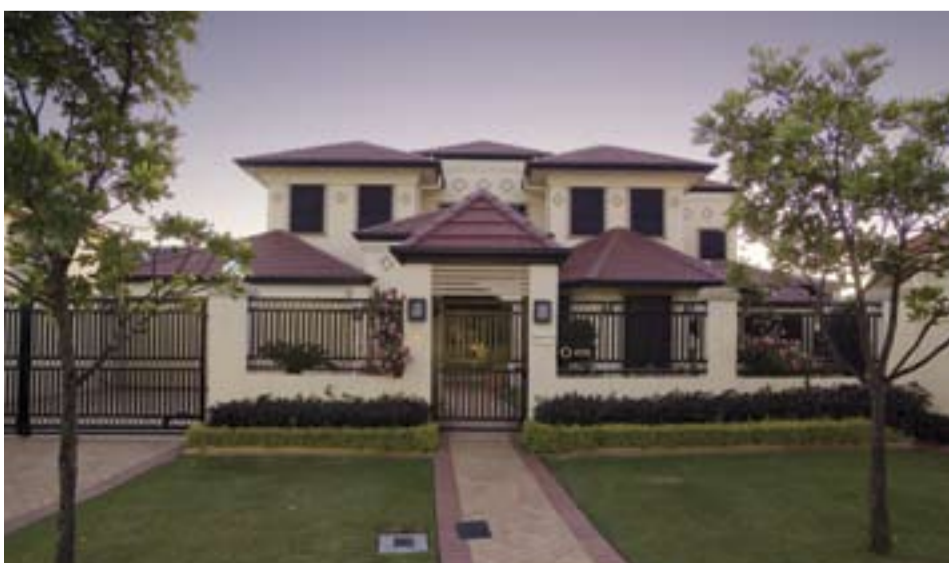


ENJOY THE HIGH LIFE AT LEVINGTON

RESIDENTS OF 8 Mile Plains, Brisbane, will be happy to know that Levington will be released in the second half of 2006 with construction just about to commence. As one of the last remaining infill sites left at 8 Mile Plains, Pask Group already has a long waiting list of clients looking to secure their position in this irreplaceable location. With award winning landscape architects Place having been appointed to oversee the landscaping design, Levington's feature central park along with a total of over 15,000 m² of manicured open space and

leafy streetscapes will be a stunning feature for all residents to enjoy, not to mention the fantastic views from the Settler's Precinct.

All members of Living Up who register their interest now will be given the first opportunity prior to public release to secure the lot of their choice. Just go to www.nevpask.com.au/levington or more information or contact Jenny on 0755 312 399.



A WORD FROM NEV



IT HAS BEEN a very busy time for us here at Pask Group since our last edition. They certainly can't say there are "too

many chiefs and not enough Indians" as I can assure you we have been working hard sourcing the best possible locations for our developments, so to ensure that we continue to build better lives and homes for our fellow Australians.

With this edition I would like to give you some insight into how we think here at Pask Group and what we look for when choosing property to develop for your new home. I will also update you on the progress of our estates.

We are regularly given information on properties that come up for sale, whether it be properties for unit developments or residential land subdivisions. One of the major factors when considering the purchase of a new parcel of land is location. Location, as we all know, is extremely important when it comes to purchasing real estate. We also look at whether a parcel of land has all services available such as sewerage and water and that the development will allow for purchasers to construct their homes with minimal costs.

In the early days of my career the focus wasn't so much on the slab constructed home as it is today and so it is important to have developments that have good drainage but are not too steep so as to place a higher

cost on the house construction. The ideal allotment is with a "4 or 5 brick fall" from back to front. This should minimize the cost of slab construction and at the same time give adequate storm water drainage. For some of our estates we have to cut and fill and put retaining walls in where necessary to facilitate, as economically as possible, the construction of the home.

In terms of our current projects, our Eden Rise Estate at Berwick has only one allotment left to sell. We have also completed stage one of the Eden Rise Village Shopping Centre with Coles being the Major tenant. Stage 2 of the centre is now in the planning stages and when completed will comprise some thirty specialty stores. Stage one of The Sanctuary at Keysborough is all but sold with stage two being released later this year.

We are looking forward to new adventures in Melbourne with other developments in the pipeline for Greenvale. This estate will have it all; 30 minutes from the CBD, 400-500 allotments and high land with views of the lights of Melbourne. When completed I have no doubt this estate will be highly sought after and I can assure you that we will be putting in every effort to make sure it is something very special.

Our Queensland estates have also been very busy with Sovereign Heights, located at Thornlands sold out. Montruse Estate, Calamvale now has some 180 lots developed with over 100 of them already sold. Montruse also has one of Queensland's largest Master Display

HOW DO I JOIN LIVING UP?

IT'S SIMPLE; every purchaser in a Pask Group project receives complimentary membership. *We will be randomly selecting members throughout the year to receive an excellent selection of prizes, such as the \$1000 Garden Makeover awarded at Chancellor Park Estate, as well as special invitations to purchase in our projects prior to public release.

To confirm your Living Up memberships simply do one of the following:

- Go to www.nevpask.com.au/livingup and complete your details and select your preference for receiving our regular newsletter, either electronically or by mail.
- Contact our Living Up Ambassador, Jenny Foden, on 07 55 312 399 during office hours or email livingup@nevpask.com.au to register your details.

*Terms and Conditions apply.

The Pask Group is committed to protecting your privacy and the privacy of any personal information provided to us. The Pask Group complies with the Privacy Act 1988 (Cth) and the National Privacy Principles. Please refer to our privacy policy available at www.nevpask.com.au or by contacting our office.

PASK GROUP
PO BOX 3278
AUSTRALIA FAIR
SOUTHPORT QLD 4215

T: 07 5531 2399
F: 07 5531 2720
E: office@nevpask.com.au

nevpask.com.au

pask[™]
livingproperty

villages. Montruse is an excellent estate being only a few minutes from Sunnybank and the Brisbane CBD. Chancellor Park on the north coast has been a very successful estate, with the only problem being not having enough stock to keep up with demand. We still have approximately 200

-300 allotments left to develop.

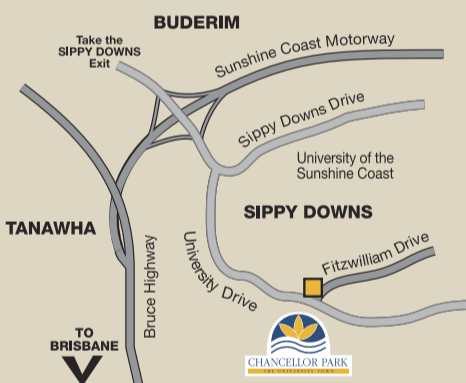
We also have two new projects located at Forest Lake and Eight Mile Plains in Brisbane, which are expected to start construction in the coming months. All in all it is going to be an exciting 2006.

Until next time, I wish you all the best of

BE PART OF OUR FAMILY

CONTACT A SALES CONSULTANT TODAY FROM ANY ONE OF OUR 6 UNIQUE PROJECTS.

Queensland Projects



CHANCELLOR PARK
Sippy Downs, Sunshine Coast
Sippy Downs Real Estate
T: 5476 9422
W: chancellorpark.com.au



MONTRUSE ESTATE
Calamvale, Brisbane
Vic Cahill Real Estate
T: 07 3711 7722
W: nevpask.com.au/montruse

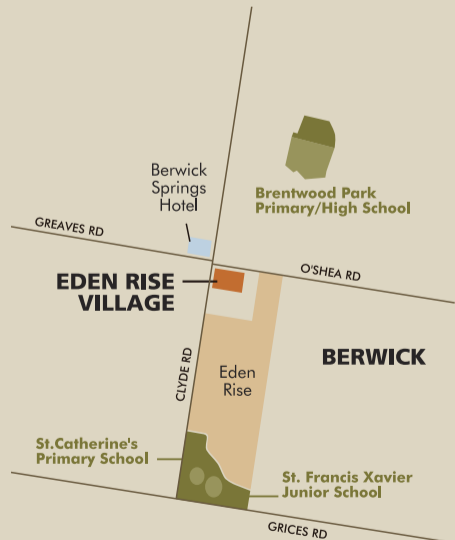


LEVINGTON
Eight Mile Plains, Brisbane
Vic Cahill Real Estate
T: 07 3711 7722
W: nevpask.com.au/levington

Victorian Projects



THE SANCTUARY
Keysborough, Melbourne
Oliver Hume Real Estate
Babu Kumar
T: 0421 711 800
W: nevpask.com.au/thesanctuary



EDEN RISE
Berwick, Melbourne
Oliver Hume Real Estate
Adrian Valea
T: 03 9702 1000
W: edenrise.com.au



EDEN RISE VILLAGE
Berwick, Melbourne

LJ Hooker Commercial
Troy Hudson
T: 0409 046 846
W: nevpask.com.au/edenrisevillage